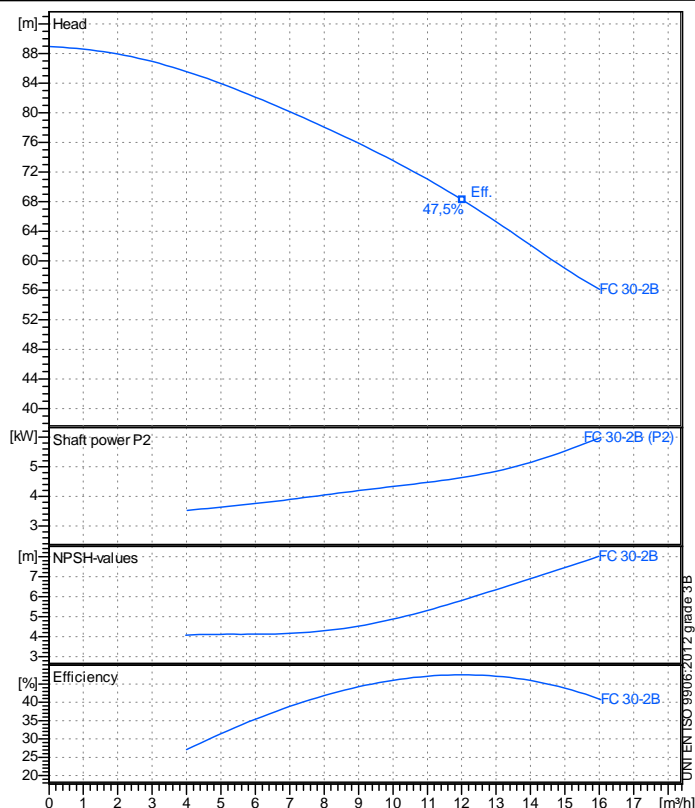


Receiver

From

Company name
Respons. Department
Person in charge
Phone number
Fax no
E-mail address



Operating data specification

Nominal flow	m³/h 0
Nominal head	m 0
Static head	m 0
NPSH - v value of plant	m 0
Inlet pressure	bar 0,09793
Fluid	Water, pure
Operating temperature t A	°C 20
Density at t A	kg/m³ 998,3
Kin. viscosity at t A	mm²/s 1,005

Pump

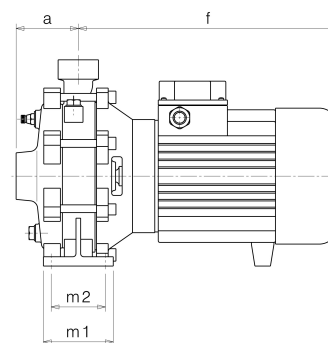
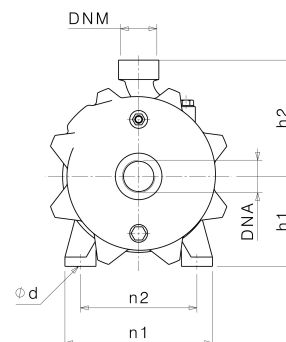
Pump name	FC 30-2B		
Size			
Design			
Speed rpm	2850	No of stages	2
Impeller type			
Flow	Nominal	m³/h	
	Max-	m³/h	16
	Min-	m³/h	0
Head	Nominal	m	
	Max-	m	89
	Min-	m	56,1
Head H(Q=0)	m	89	
NPSH 3%	m		
Max. working pressure	bar	8,71	
Shaft power	kW		
Efficiency	%		
Max absorbed power	kW	5,982	

Materials Pump

Shaft	Stainless steel AISI 431 (1.4057)		
Impeller	Brass		
Pump body	Cast iron EN-GJL-200		
Support	Aluminium		
OR	NBR Rubber		
Mechanical seal	Q1VEG (SiC/AIO/EPDM)		
Motor	Frame size	132 S	
Manufacturer / Type	SAER	132 S 2 - 5,5 3~	
Rated power kW	5,5	Efficiency 4/4	0 %
Electric current A	7,4 A	Speed rpm	2950
Electric voltage V	400 V	3~	Hz 50
Starting mode	Unknown		
Degree of protection	IP 55	Insulation class	F

Dimensions in mm

a	91
DNA	G 1 1/2"
DNM	G 1 1/4"
f	396
h1	132
h2	170
m1	100
m2	70
n1	240
n2	170
od	14



Remarks:

Project	Project ID	Created by	Created on	Last update
			2019-02-13	